

2021 12 12

Experts of financial
derivatives pricing

[2017]1

F3074487

Z0015486

shengweny@jinxinqh.com

F3076375

lin jingwei @jinxinqh.com

2205

2000/2200

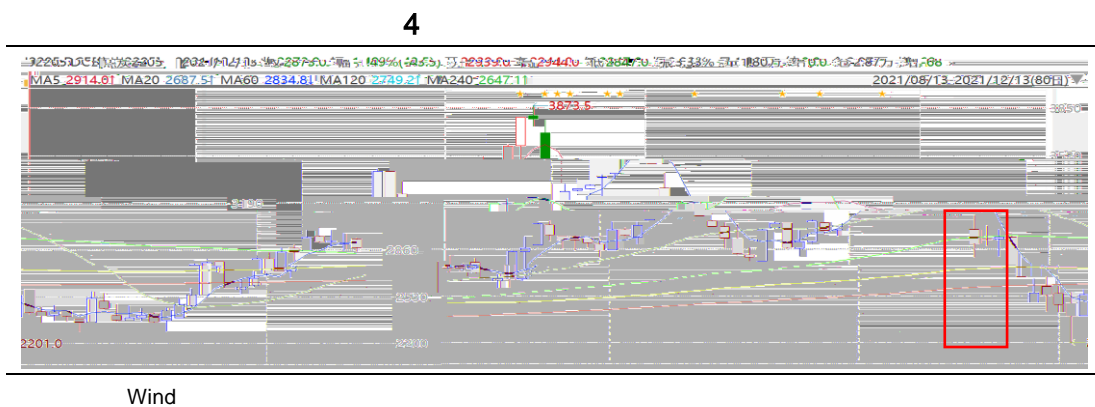
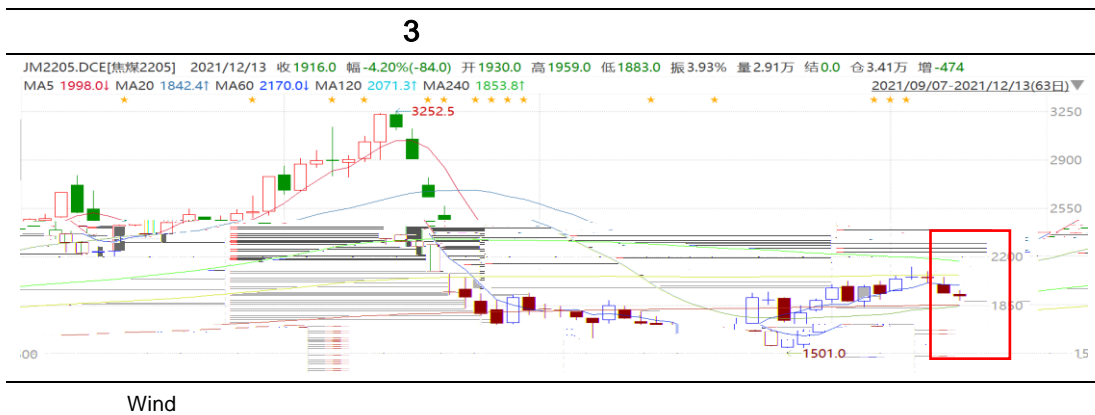
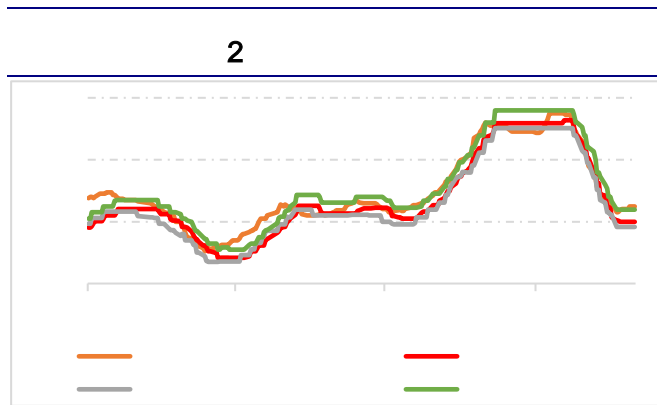
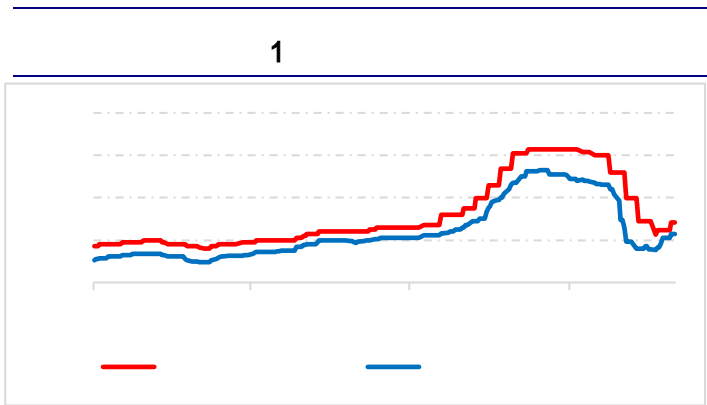
2205

2940/3050/3140



请务必仔细阅读正文之后的声明

1934.5 / 2205 5.55% 2911 / 2205 1.52%
5# 2100 / 8
200



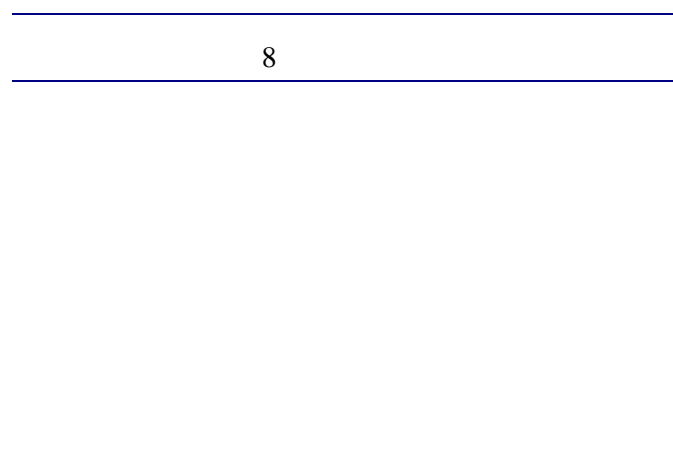
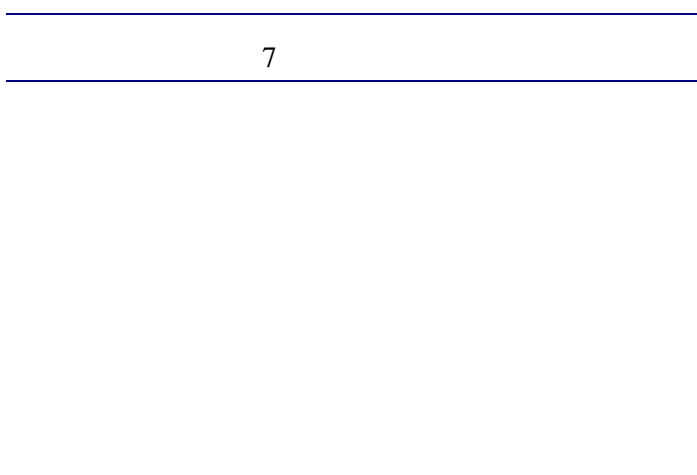
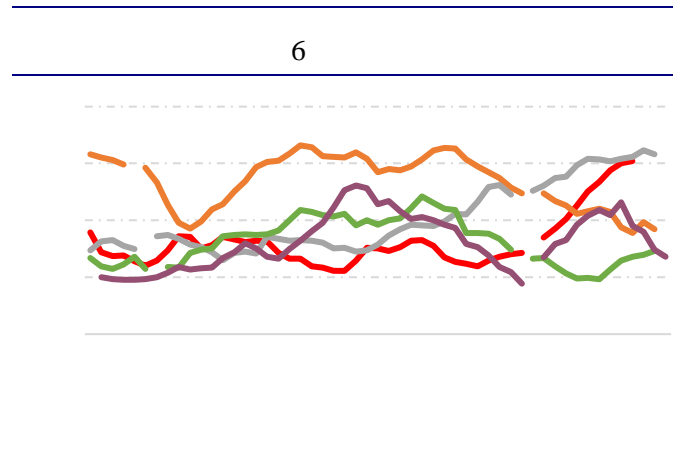
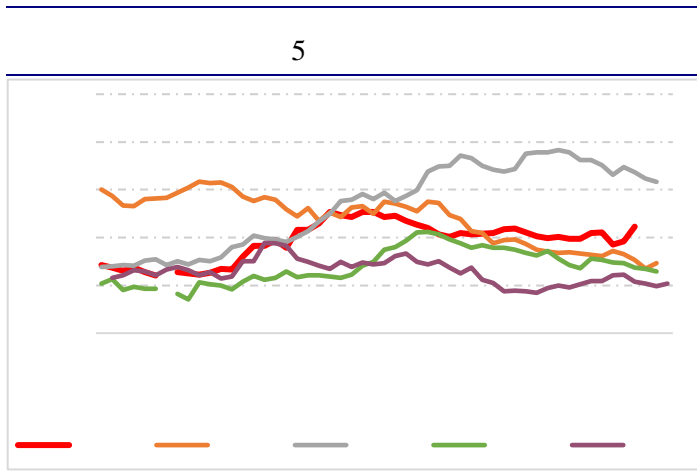


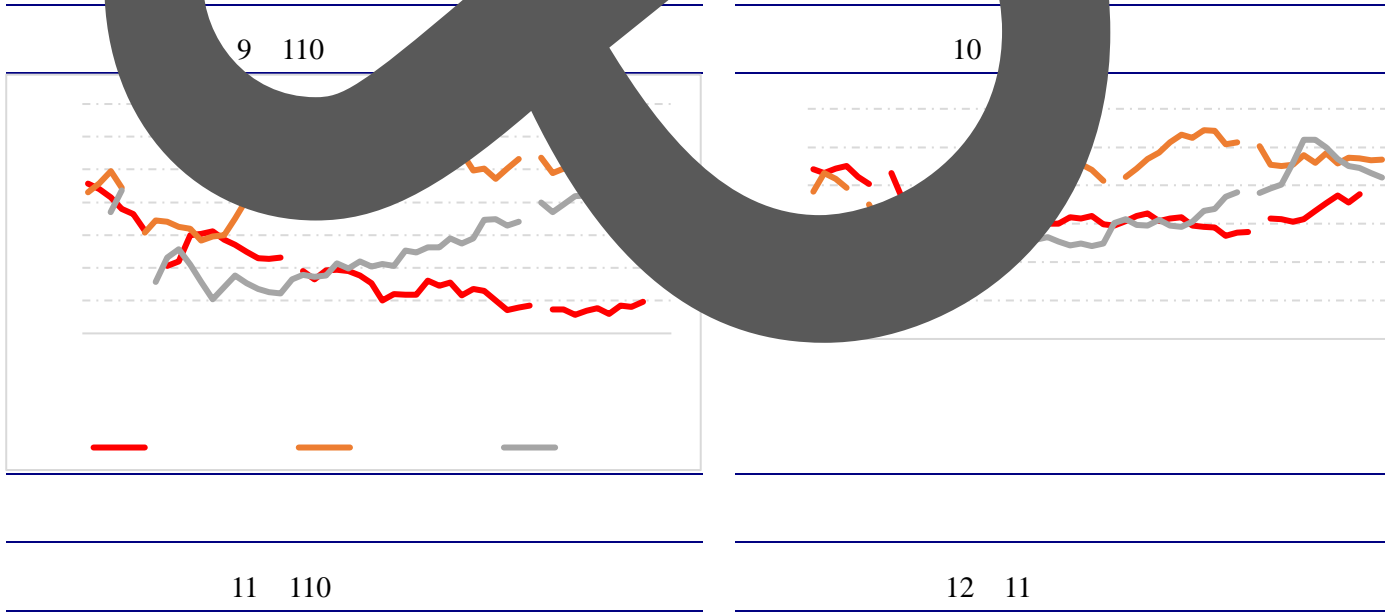
2.1

61

3.62

100 /





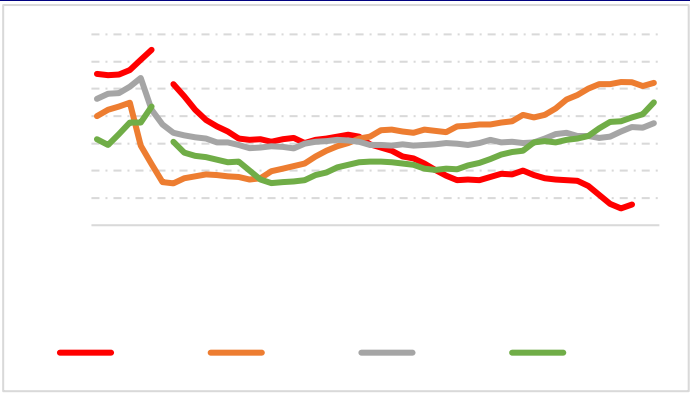
2.3

6

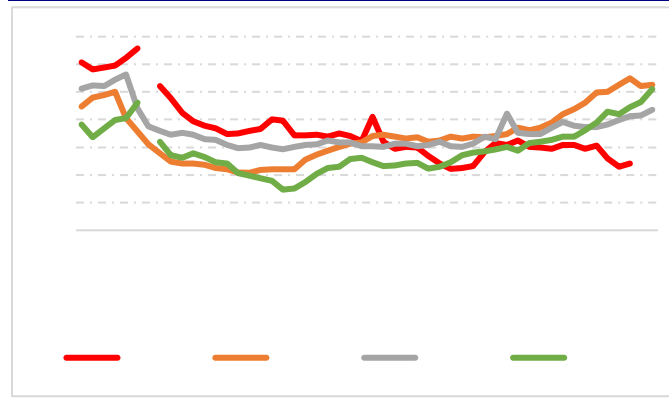
20



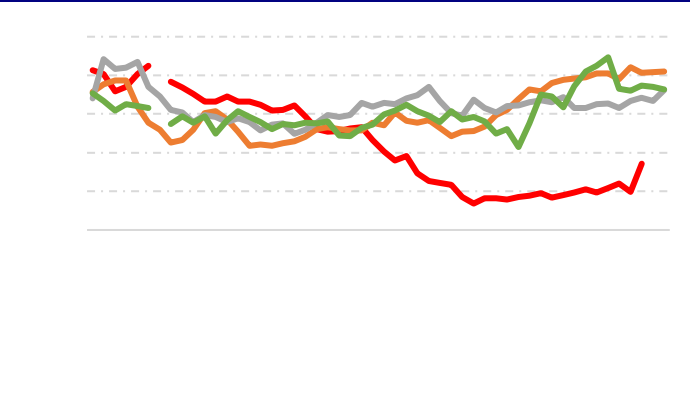
13



14



15 247



16 247



2.4

0.49 /



17

%

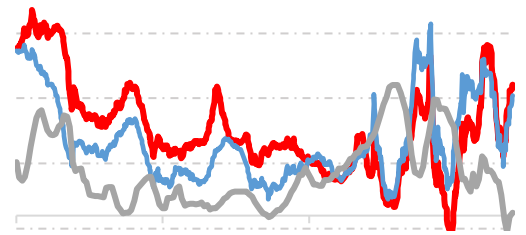
18

19

20

21

22





2.5

200

12

13 D

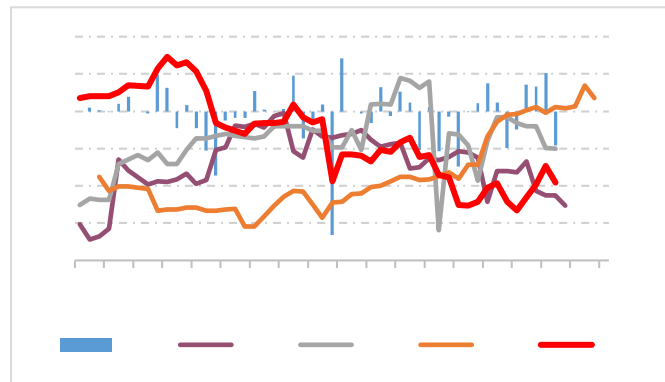
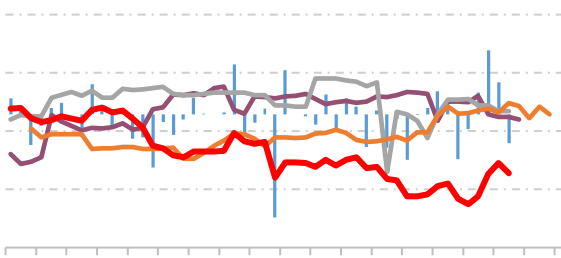
D C

23 247

24 247

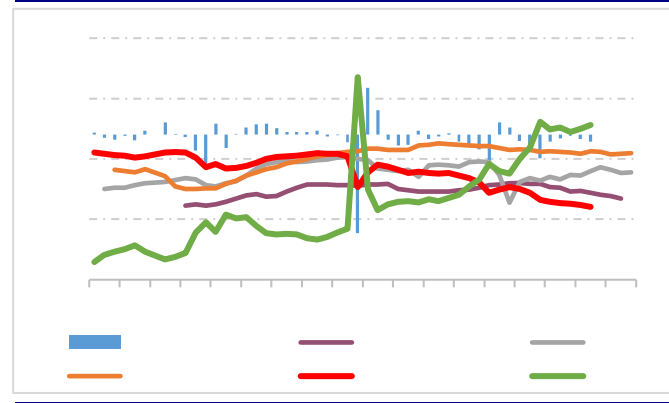
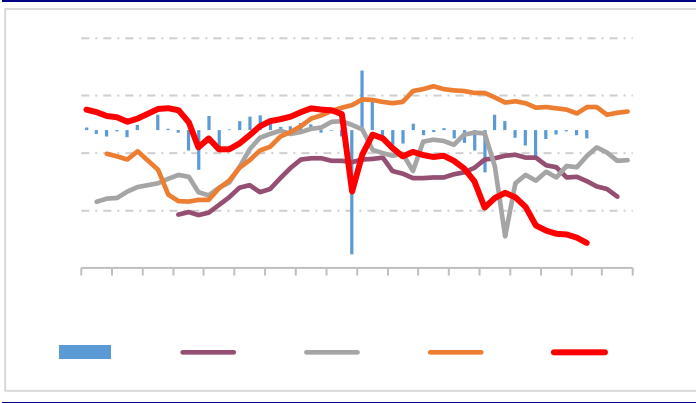
25 247

26 247



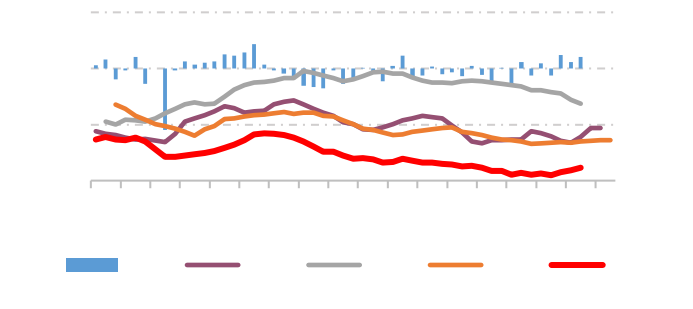
27

28 247



2.6

29







16

400-0988 278
<https://www.jinxinqh.com/>