

2205

3159 /

2757 /

297 /

10.75%

2348

1 3 4

2220 +20 /

5500 1350-1450

/

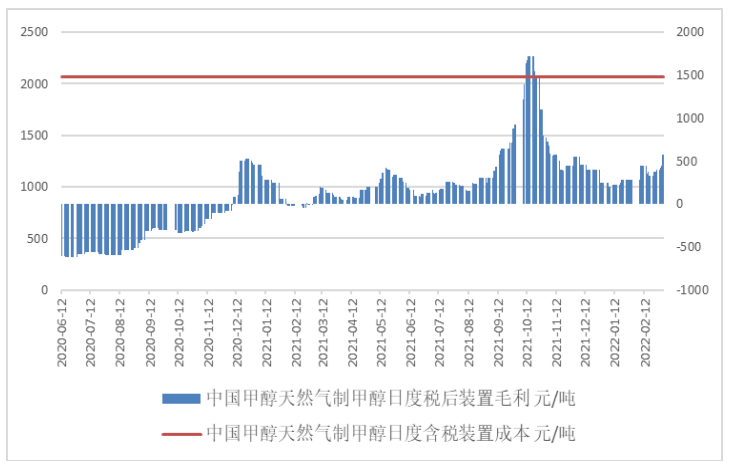
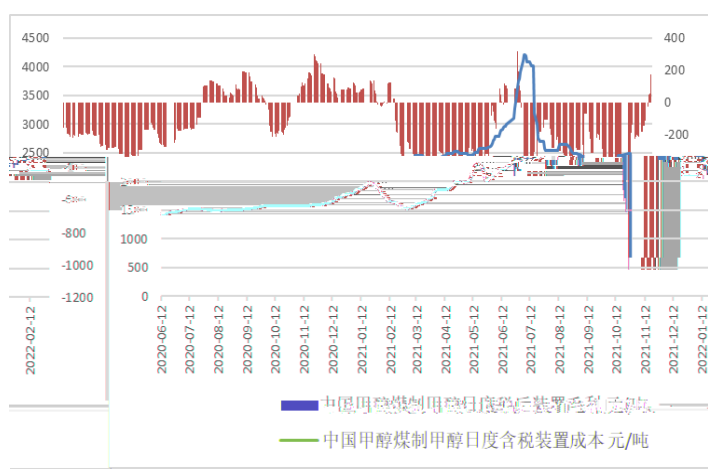
173 +198 /

2070 0 / 572 +173

/

5

6



2

3 4

80.54 +3.54

46 +3.75

15.4 -2.1

13.25 +3.4

4.59 -0.81

1892-2892

3 4

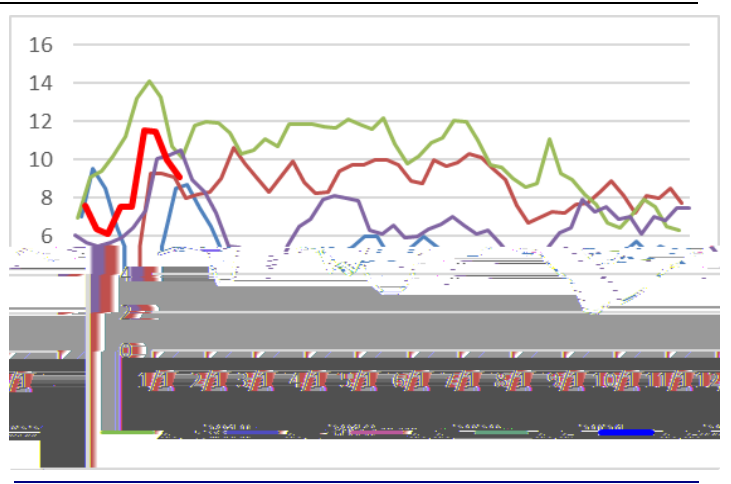
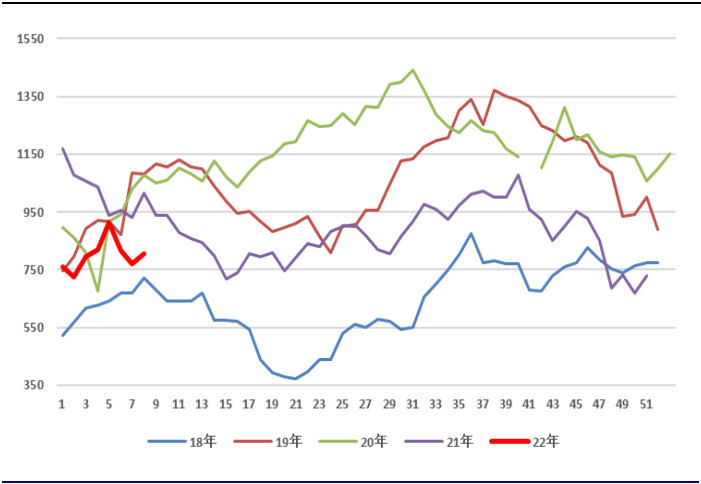
9.10

0.87

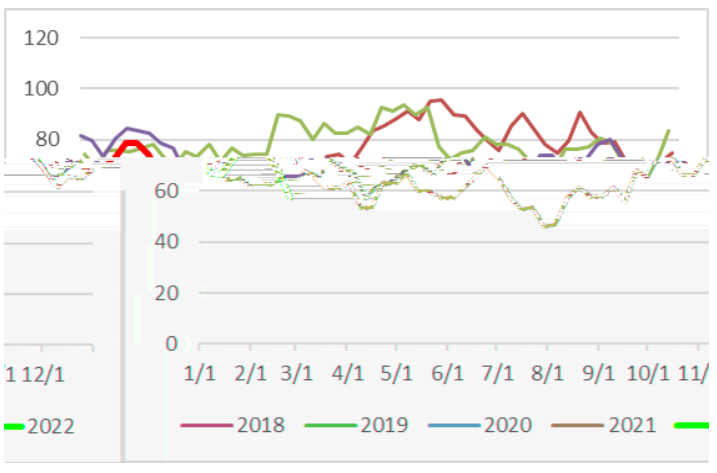
MTO

7

8



9 MTO



3 3 4
47.77 +1.17 %

77.43 +1.32 %

3 4

28.43

10

%

11

%

12

%

13

%

4

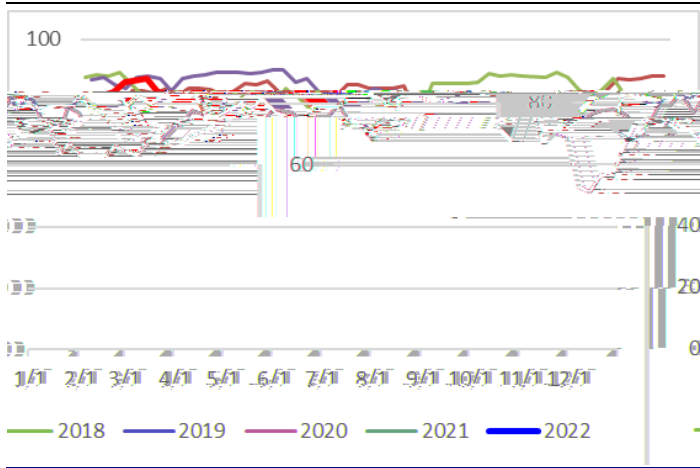
3 4

82.07 +0.1 %

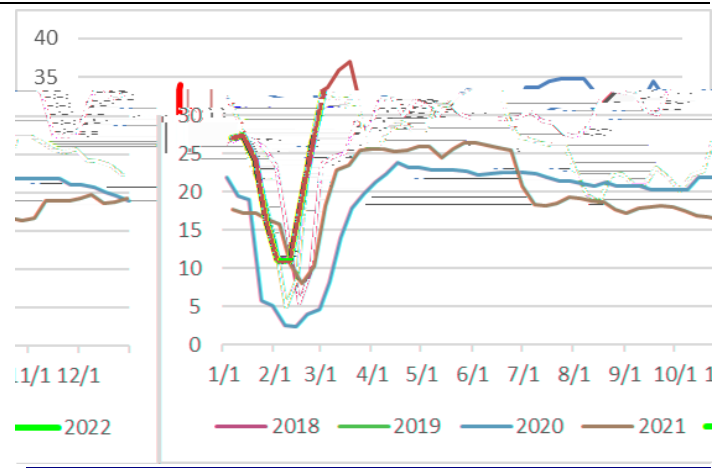
33.97 +7.8 %

MTBE

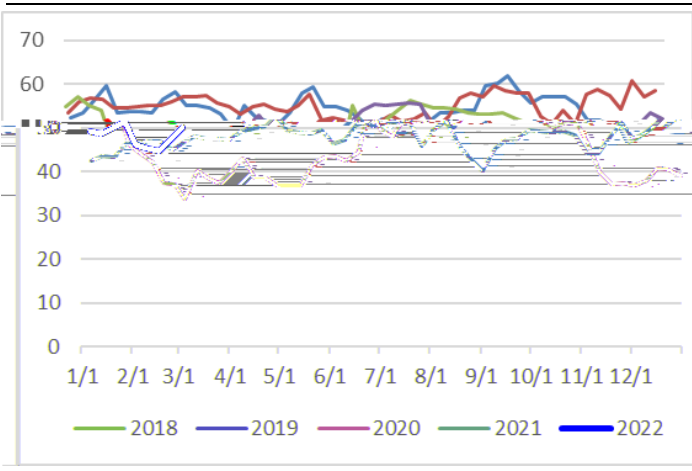
4321198ETCEMCCCEMC /P AMCD 49>BDC q0.0050088



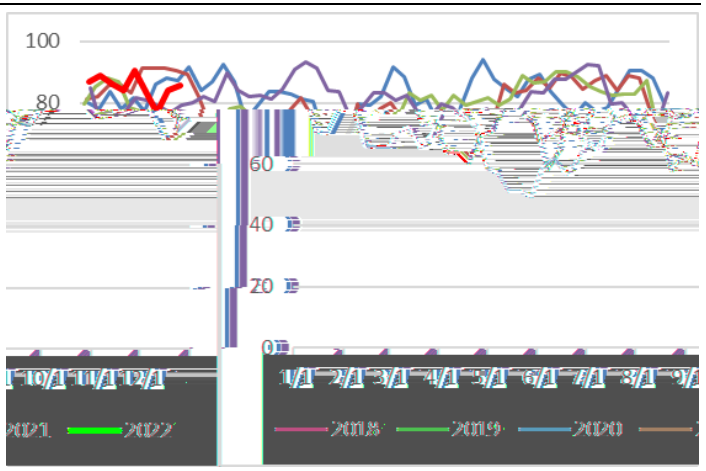
16 MTBE



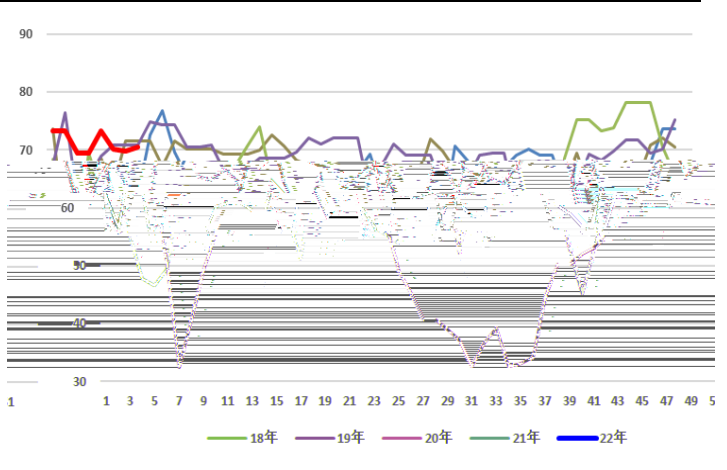
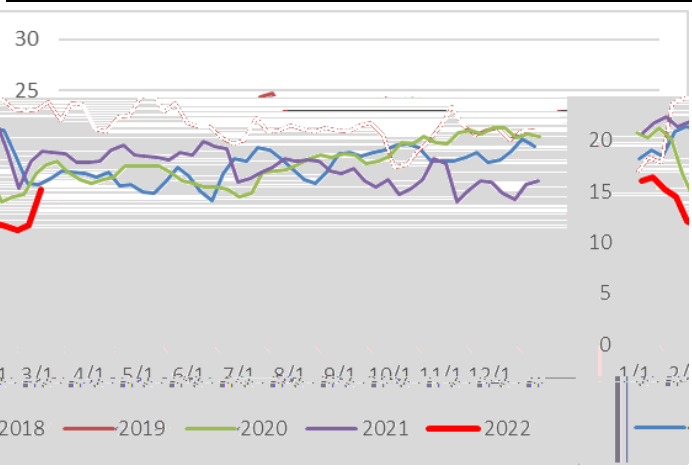
17



18



19 DMF



	120		9 18	1.5
	60			0.84
	100			1.38
	10			0.18
	180		2 14	3.85
	60			1.26
	35			0.56
				9.21

2

	Bioethanol		2#95	
	Metafrax		120	
	Petronas		2#242	
	Methanex		2#265	
	BMC		85	
	Zagros PC		2#330	2
	Kaveh	Dayyer	230	
	Sabal an PC		165	

PP-3MA

MTO

MTO

“ ”

“ ”

16

400-0988-278

<https://www.jinxinqh.com/>