



4

95-120 /

4

70.81% 3

1.84%

3

4

87.31% +2.97%

4

31.89% -3.24%

4

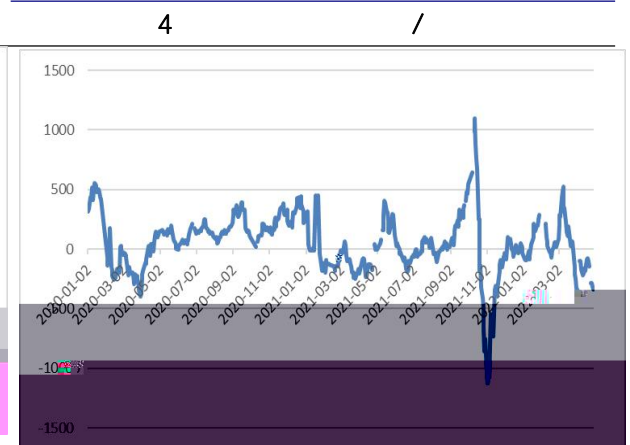
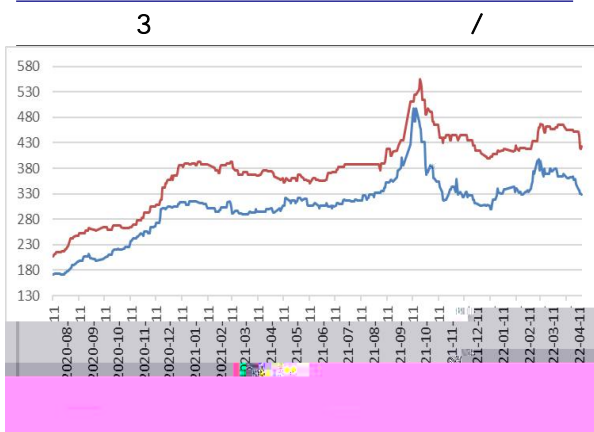
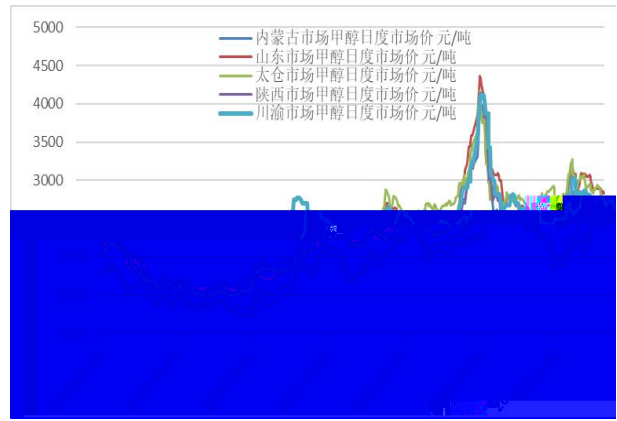
31.89% -3.24% MBE

4

46.59%

-"

	4	09	3046 /	2651 /	295
/	9.82%		4	4	
2512 /	3	87 /	2870 /	3	165 /
	4		4	28	FOB 108.5
/	3	21 /	FOB	359.75 /	3
	20.75 /		4		
	4	29	-337 /	3	
1		/	2		/



1

4 29

2335 /

3

165 /

4

4 29

-78 /

3

193 /

2070 /

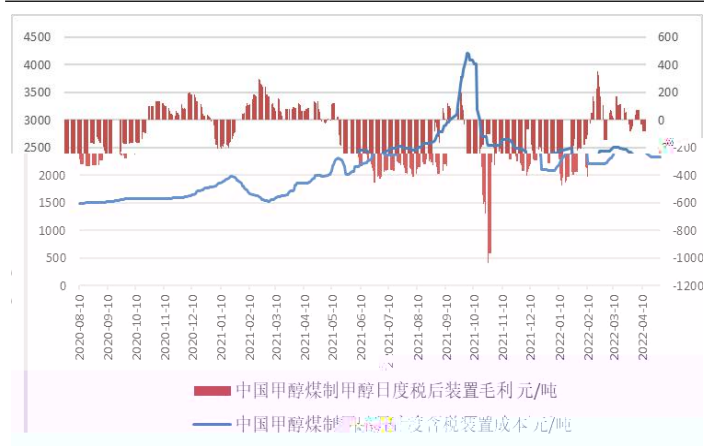
3

386 /

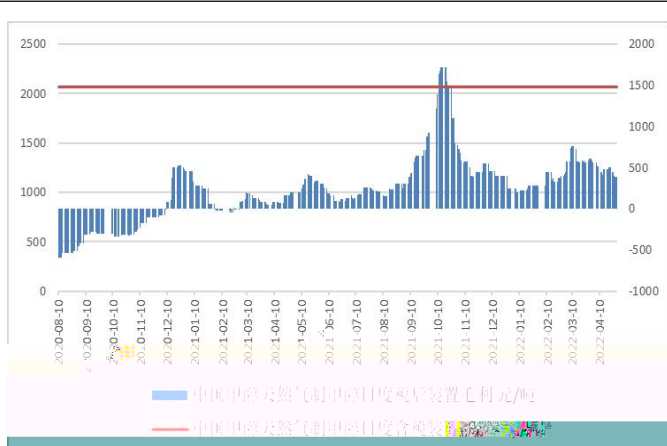
3

218 /

5



6



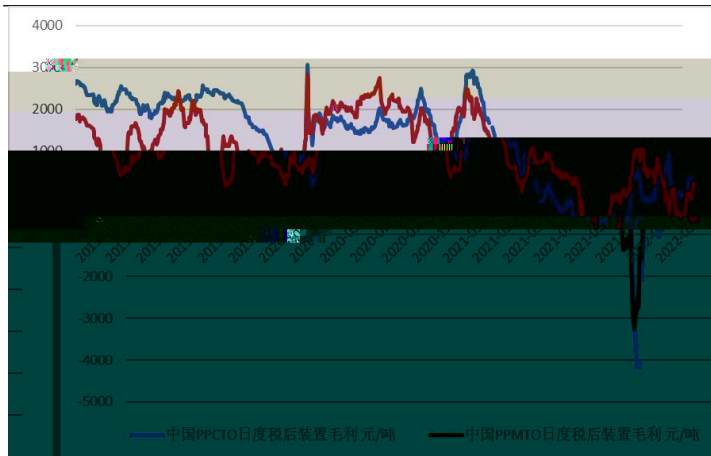
4

MBE

MBE

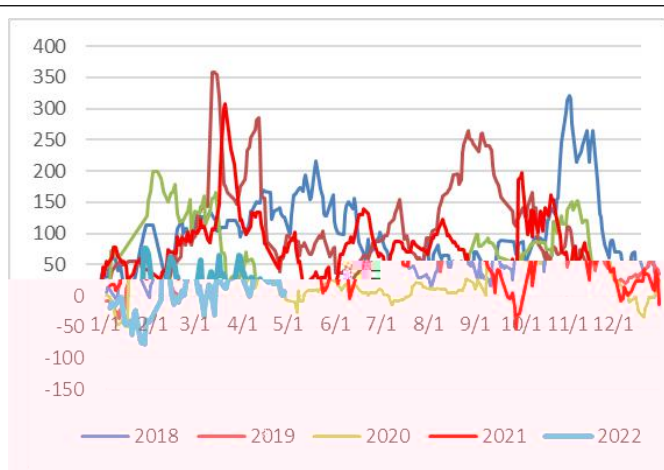
7

/



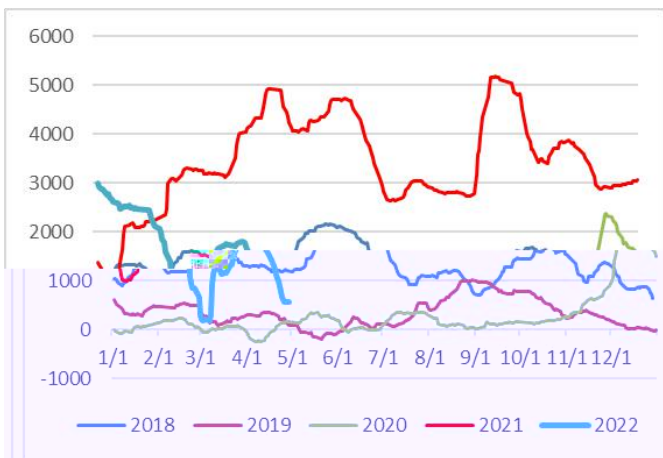
8

/



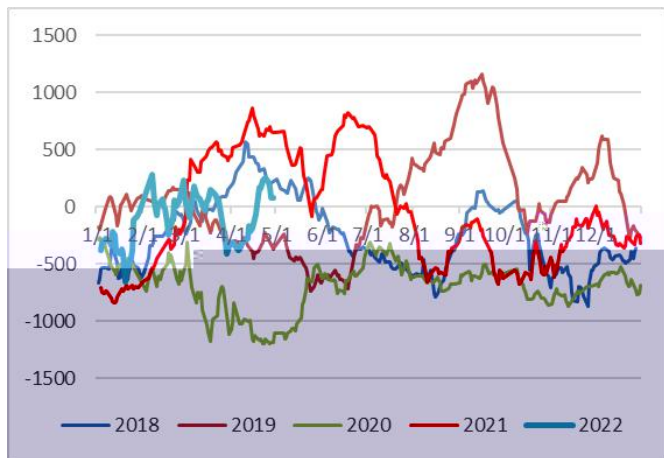
9

/



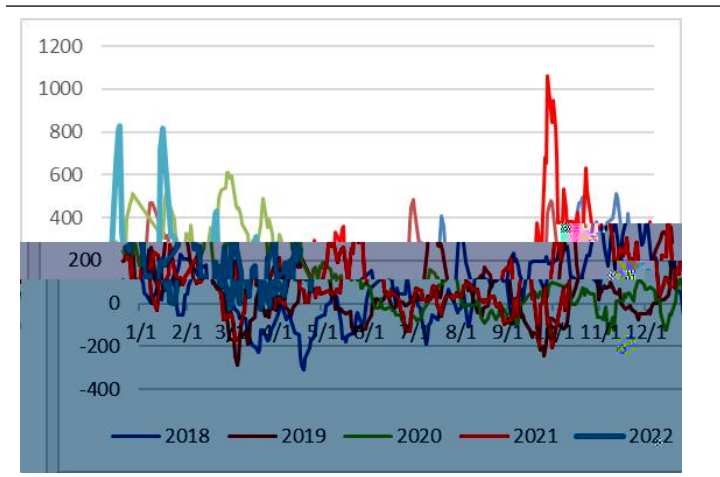
10 MBE

/



11

/



2

4

70.81%

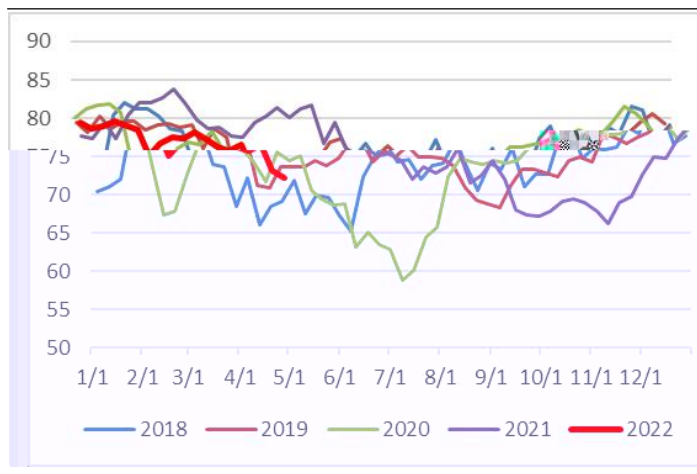
3

1.84%

3

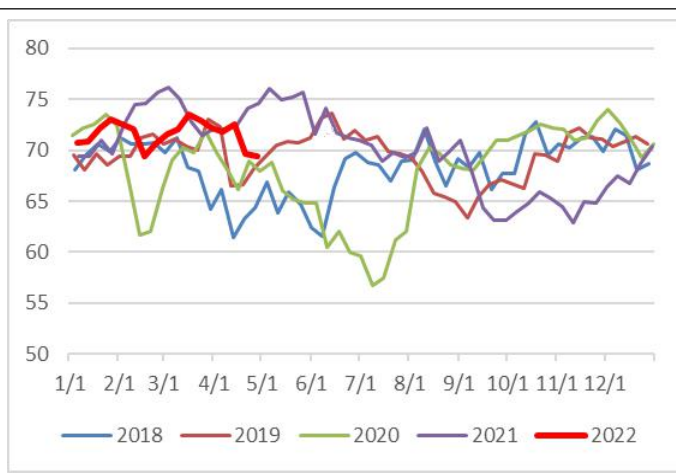
10

%



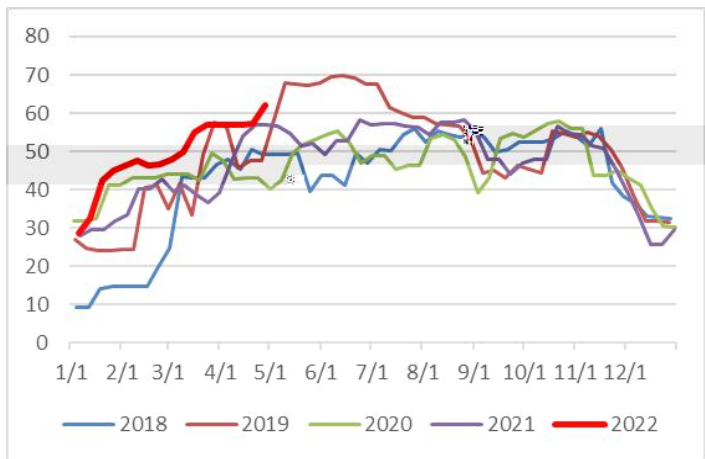
11

%



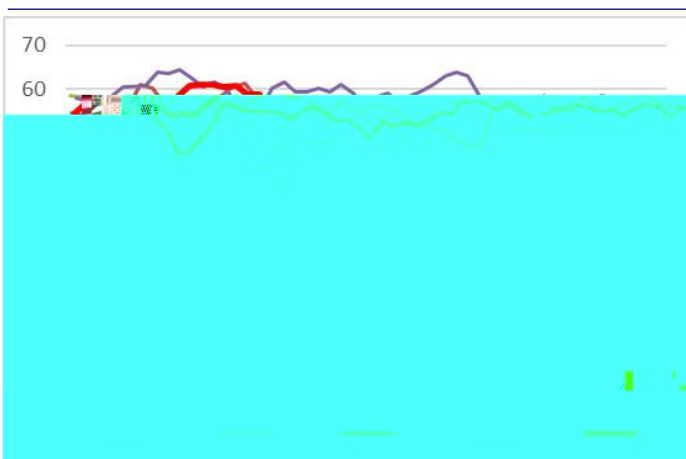
12

%



13

%



4

626

3

37

4

110

3

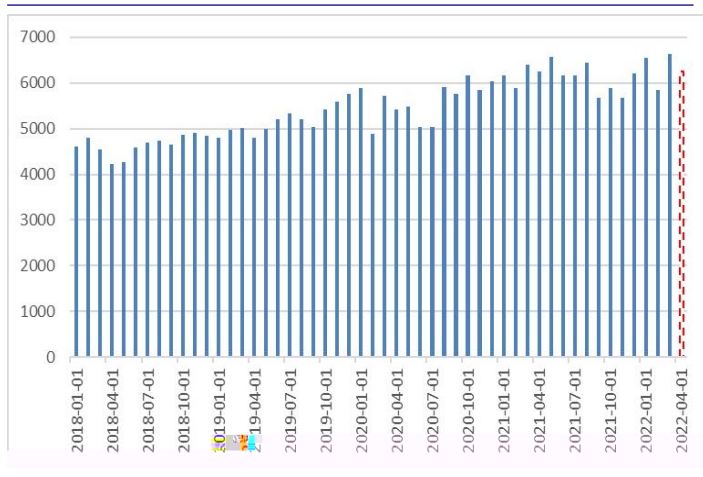
13.26

4

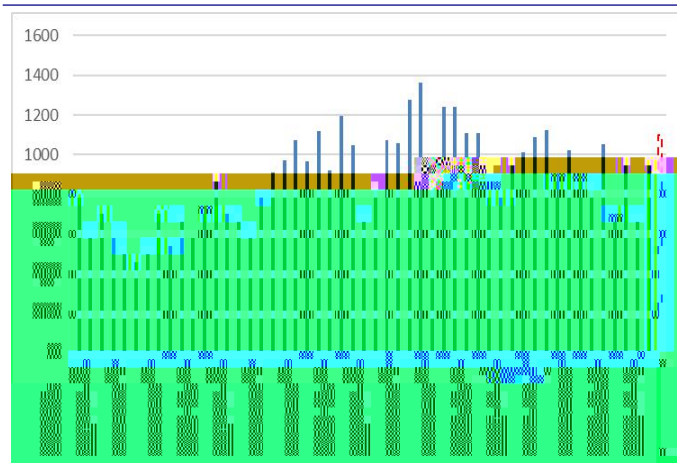
3

24.39

12



13



3

4

4

MO

75.53

MBE 4

MBE

MBE

MBE

4

DMF 4

87.31%

3

2.97% 4

31.89%

3

3.24%

31.89%

3

3.24%

0.52

17.0

46.59%

3

4.51%

13.77%

3

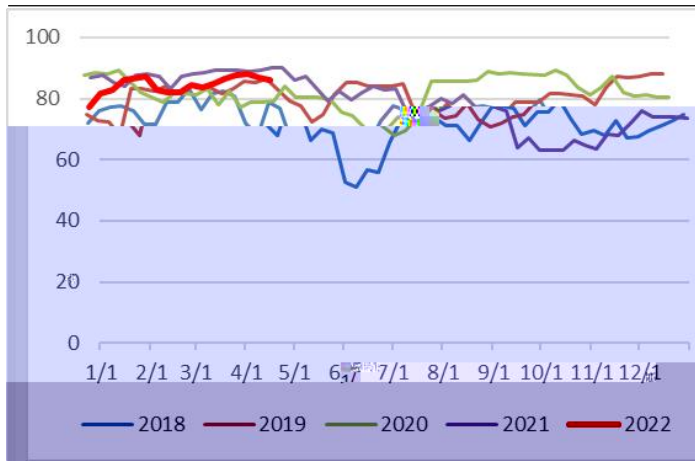
1.27%

69.68%

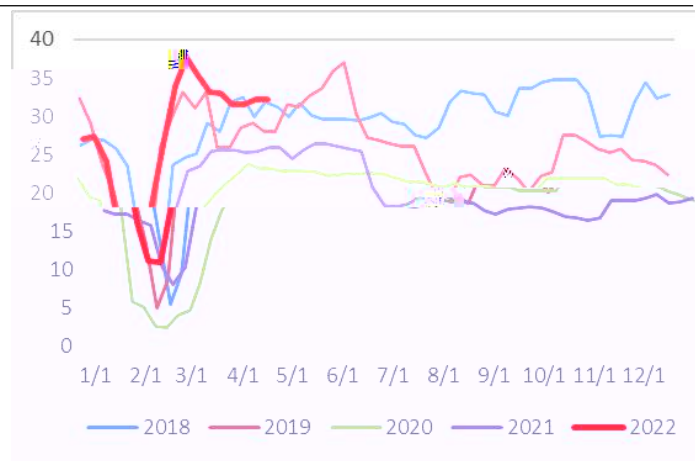
3

10.27%

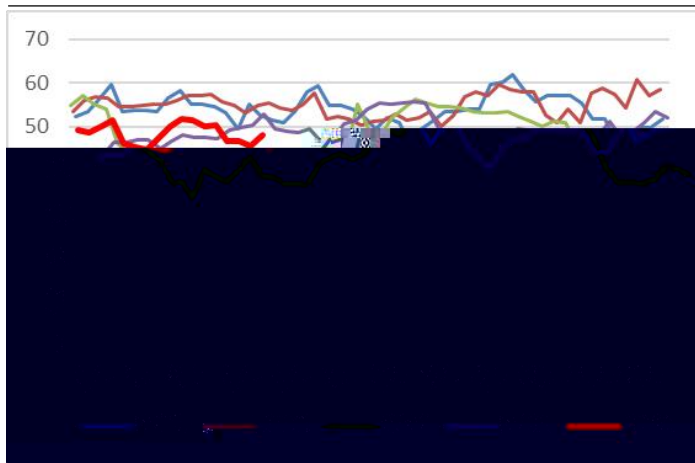
14



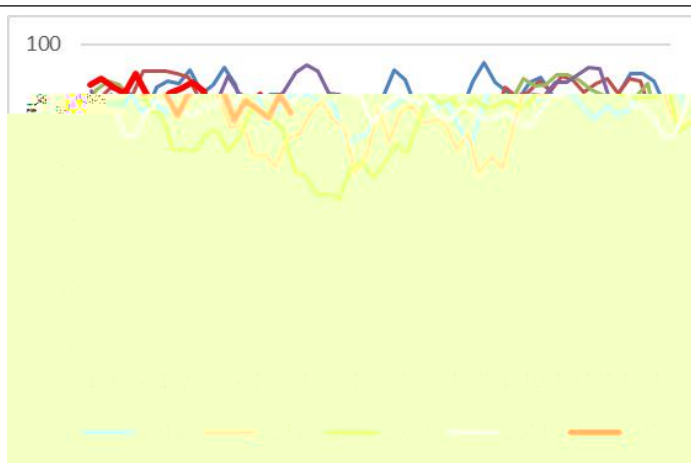
15



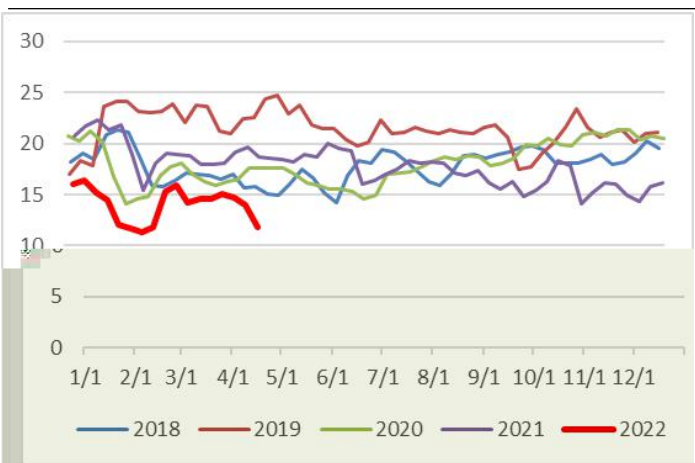
16 MBE



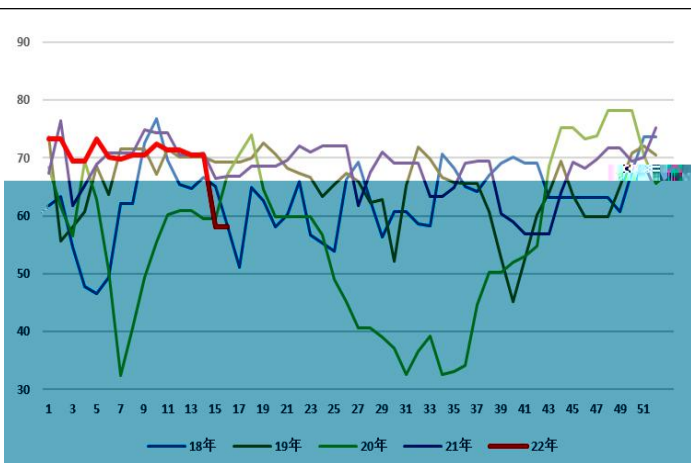
17



18



19 DMF



4

4

80.86

3

77.88

2.98

4

45.52

3

43.86

1.66

121.58

3

117.94

3.64

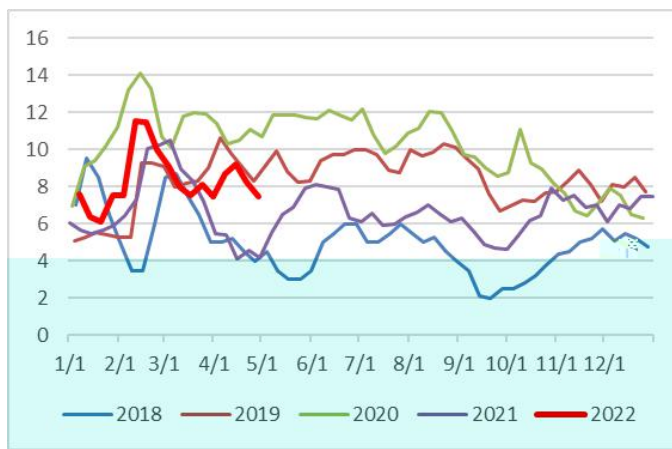
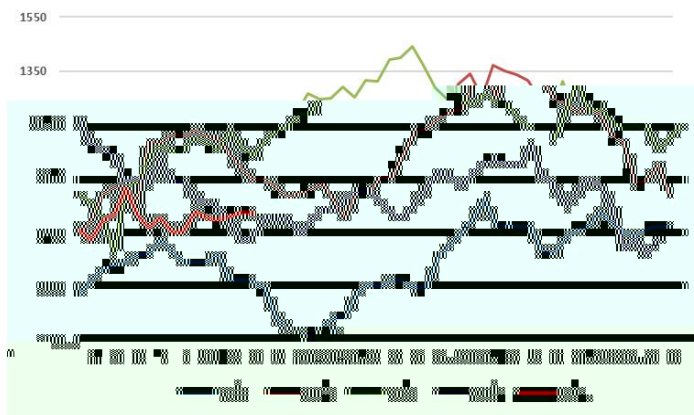
MO

4

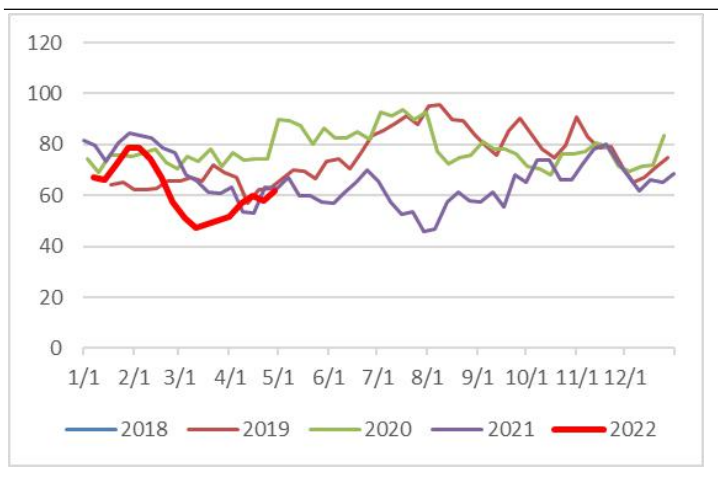
MO

7

8



9 MO



5

1

	40		5
	15		4 28
	12		4 15
	60		5
	60		5
	60		4 9
	60		4 15 20
	60		5
	20		4 18
	40	+	4 30

2

	Bi oethanol		2#95	
	Methanex Egypt		130	
	Shell I		40	4
	Metafrax		120	
	Petronas		2#242	5 60
	Statoi l	Tj el dbergodden	90	5
	MHL		5#403	190
	ZPC		2#330	
	Sabal an PC		165	





" "

" "