

Experts of financial  
derivatives pricing

[2017] 1

7

8

8

9

F3074487

Z0015486

shengwenyu@ixinqh.com

8

8

F3076375

lijingwei@ixinqh.com



# 3d2

1844 /

8.96% 2133.5 /

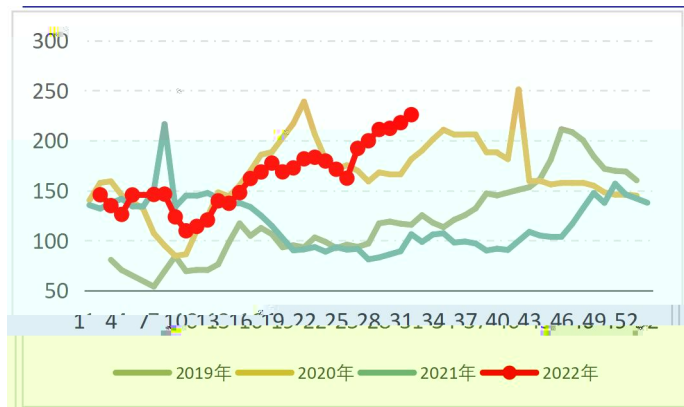
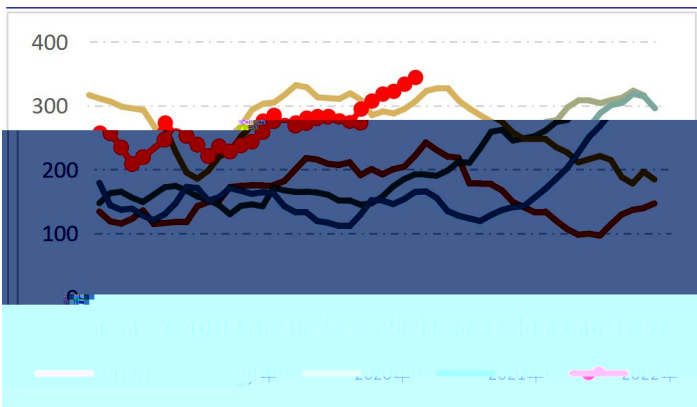
2.1

7

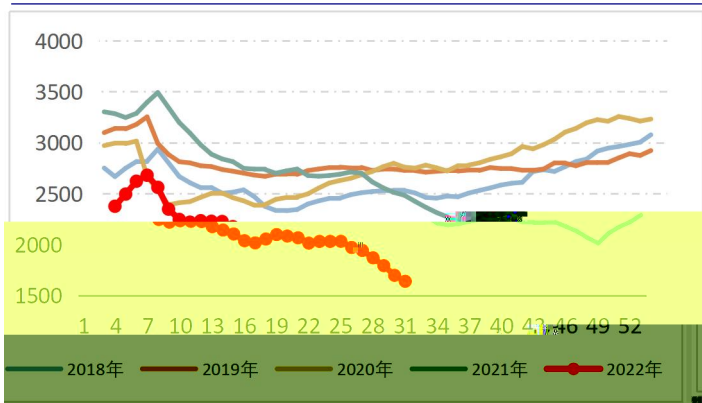
/

+

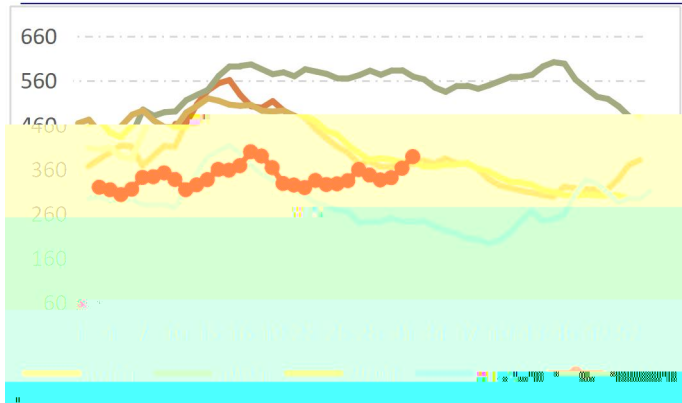
(



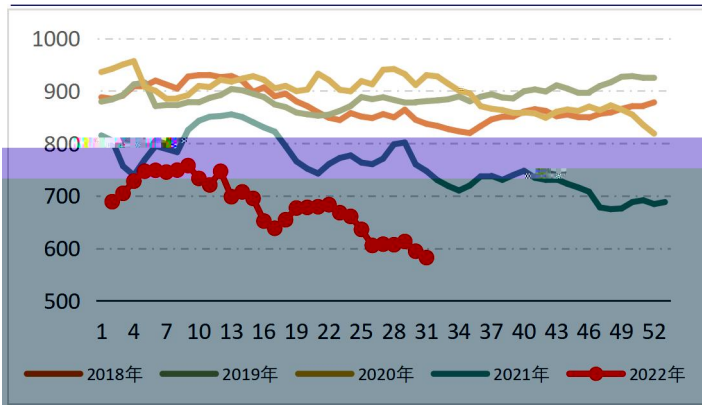
)



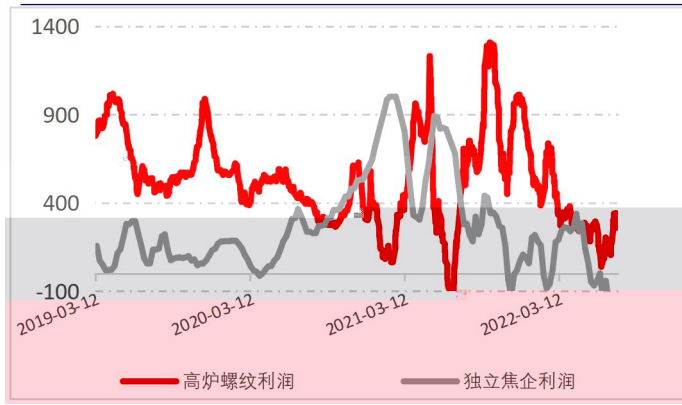
\*



+



#"

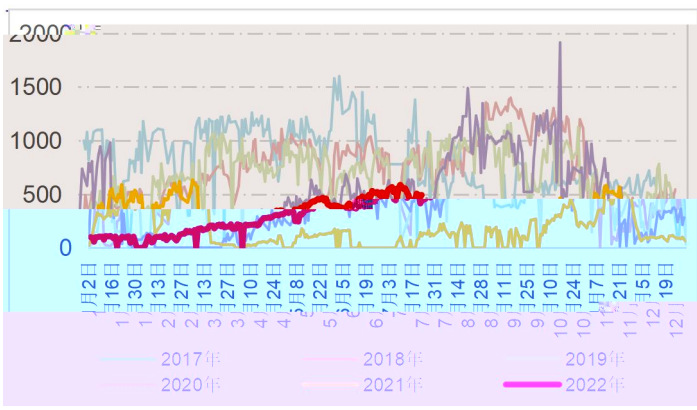


2 2

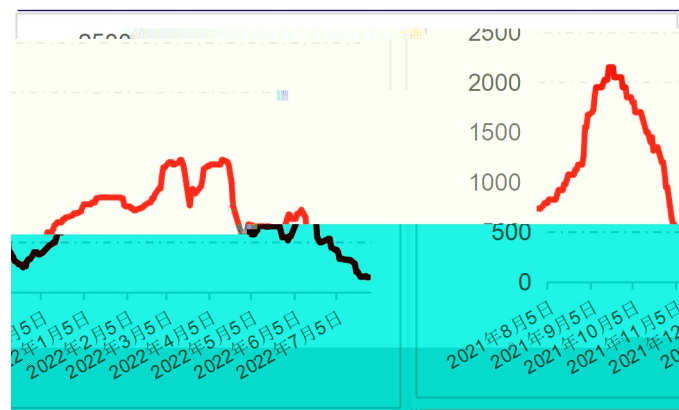
800-1000

500

#%



#&



2.3

225

#'

#) S&)

#\*

7

8



" "

n



<https://www.jinxinqh.com/>