



	426.55	422.09	+446
	24.47	23.54	+93
	351.2	454.8	-103.6
	734.2	616.4	+117.8
EI A	91%	92%	-1%
	225.29	225.13	+16
	109.32	111.72	-240
	1210 /	1210 /	0

EI A

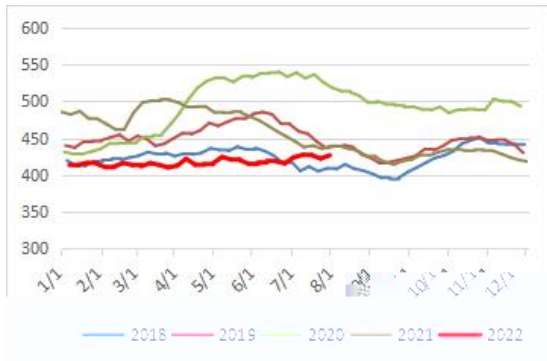
7 29

EI A

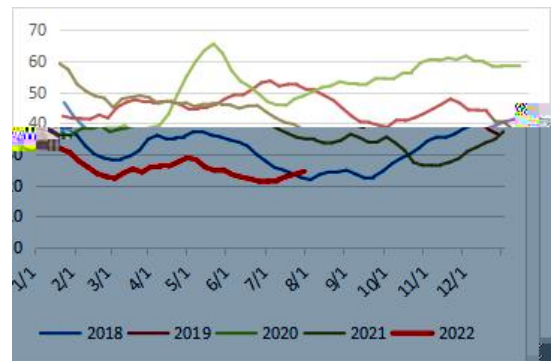
426.55

446

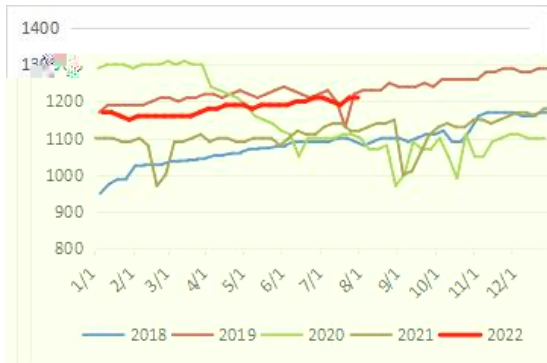
1 EIA



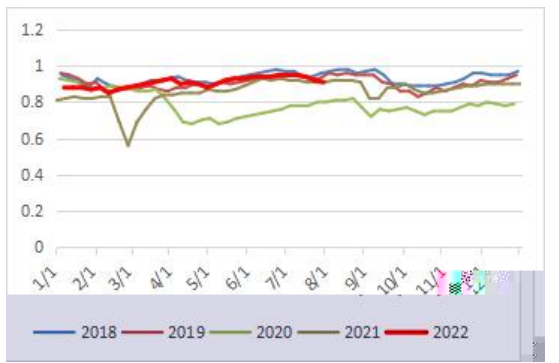
2



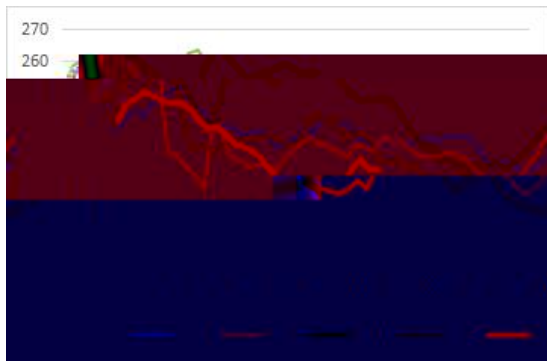
3



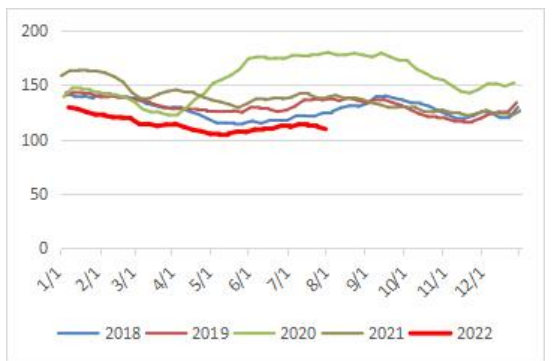
4 EIA %



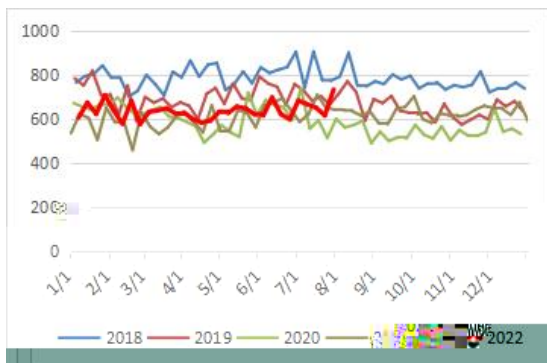
5



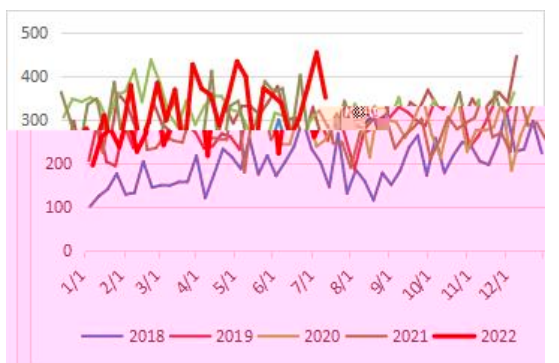
6



7



8



EIA

EIA

" "

" "