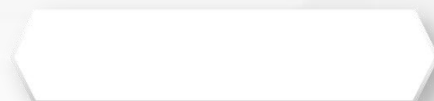




金信期货  
GOLDTRUST FUTURES

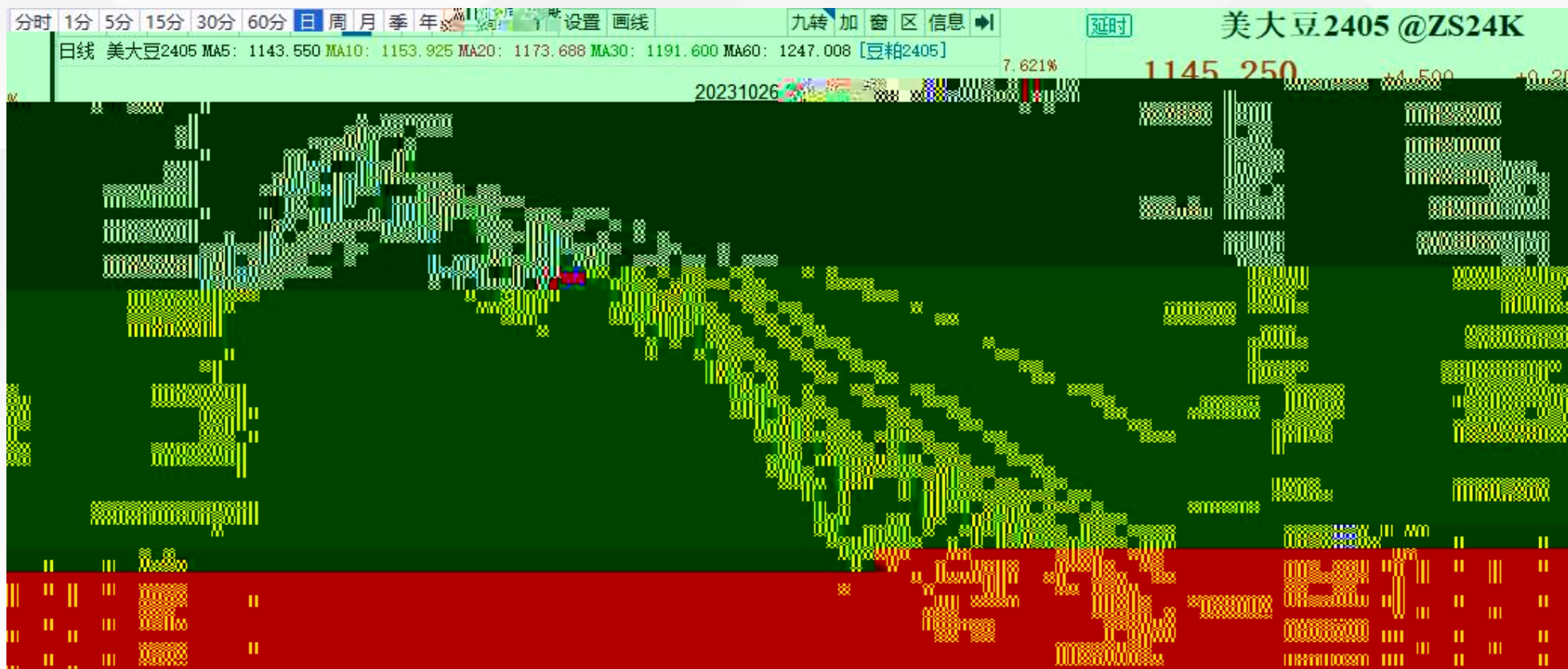




金信期货  
GOLDTRUST FUTURES







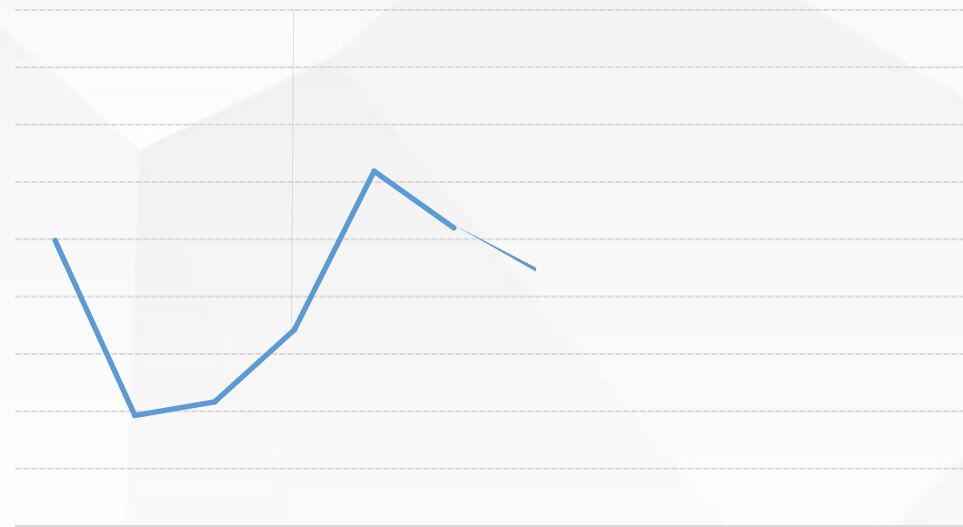


World Soybean Supply and Use 1/  
(Million Metric Tons)

2021/22		Beginning Stocks	Production	Imports	Domestic Crush	Domestic Total	Exports	Ending Stocks
<b>2023/24 Proj.</b>								
World	Jan	101.67	398.98	168.35	329.40	383.66	170.94	114.60
	Feb	103.57	398.21	167.85	329.29	383.03	170.57	116.03
World Less China	Jan	68.08	378.14	66.35	231.40	263.16	170.84	78.57
	Feb	69.78	377.37	65.85	231.29	262.53	170.47	80.00
United States	Jan	7.19	113.34	0.82	62.60	65.97	47.76	7.62
	Feb	7.19	113.34	0.82	62.60	65.97	46.81	8.57
Total Foreign	Jan	94.68	285.63	167.53	266.80	317.69	123.18	106.98
	Feb	96.38	284.87	167.03	266.70	317.06	123.76	107.46
Major Exporters 3/	Jan	52.82	220.20	6.58	92.85	104.14	112.80	62.67
	Feb	54.78	219.20	6.58	92.85	104.14	113.30	63.12
Argentina	Jan	17.21	50.00	6.10	35.50	42.75	4.60	25.96
	Feb	17.21	50.00	6.10	35.50	42.75	4.60	25.96
Brazil	Jan	35.35	157.00	0.45	53.75	57.50	99.50	35.80
	Feb	37.35	156.00	0.45	53.75	57.50	100.00	36.30
Paraguay	Jan	0.21	10.30	0.02	3.50	3.65	0.00	0.58
	Feb	0.17	10.30	0.02	3.50	3.65	6.30	0.54



	2017	2018	2019	2020	2021	2022	2023	2024 1/
	- Million Acres -							
Wheat	46.1	47.8	45.5	44.5	46.7	45.8	49.6	47.0
Corn	90.2	88.8	89.4	90.4	92.9	88.2	94.6	91.0
Soybeans	90.1	89.2	76.1	83.4	87.2	87.5	83.6	87.5
<b>Total</b>	<b>226.4</b>	<b>225.8</b>	<b>211.0</b>	<b>218.2</b>	<b>226.8</b>	<b>221.4</b>	<b>227.8</b>	<b>225.5</b>

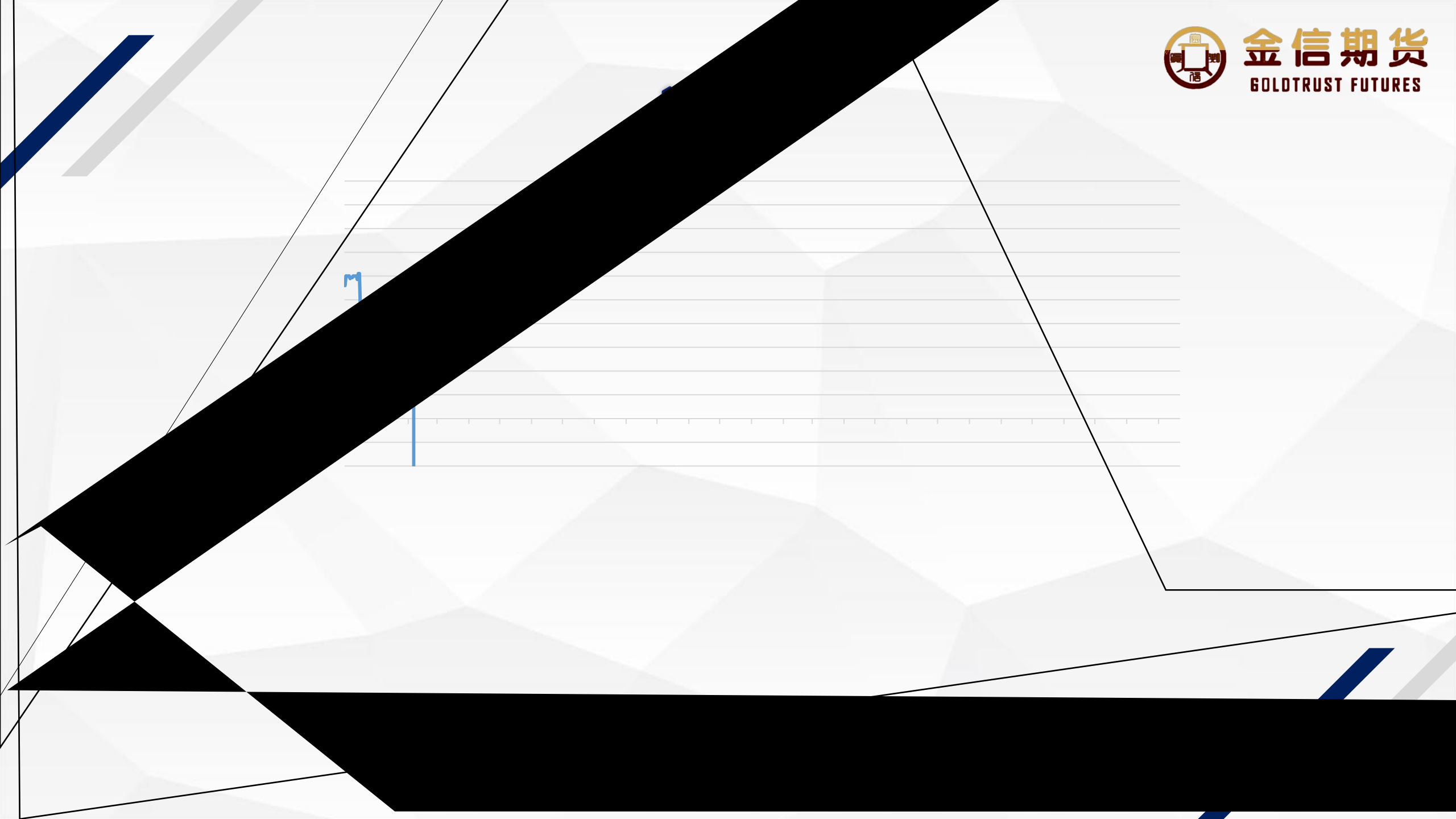


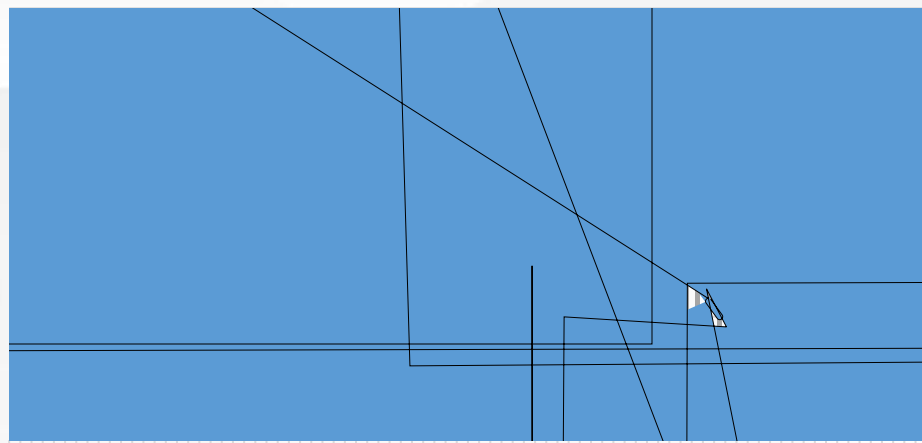






金信期货  
GOLDTRUST FUTURES





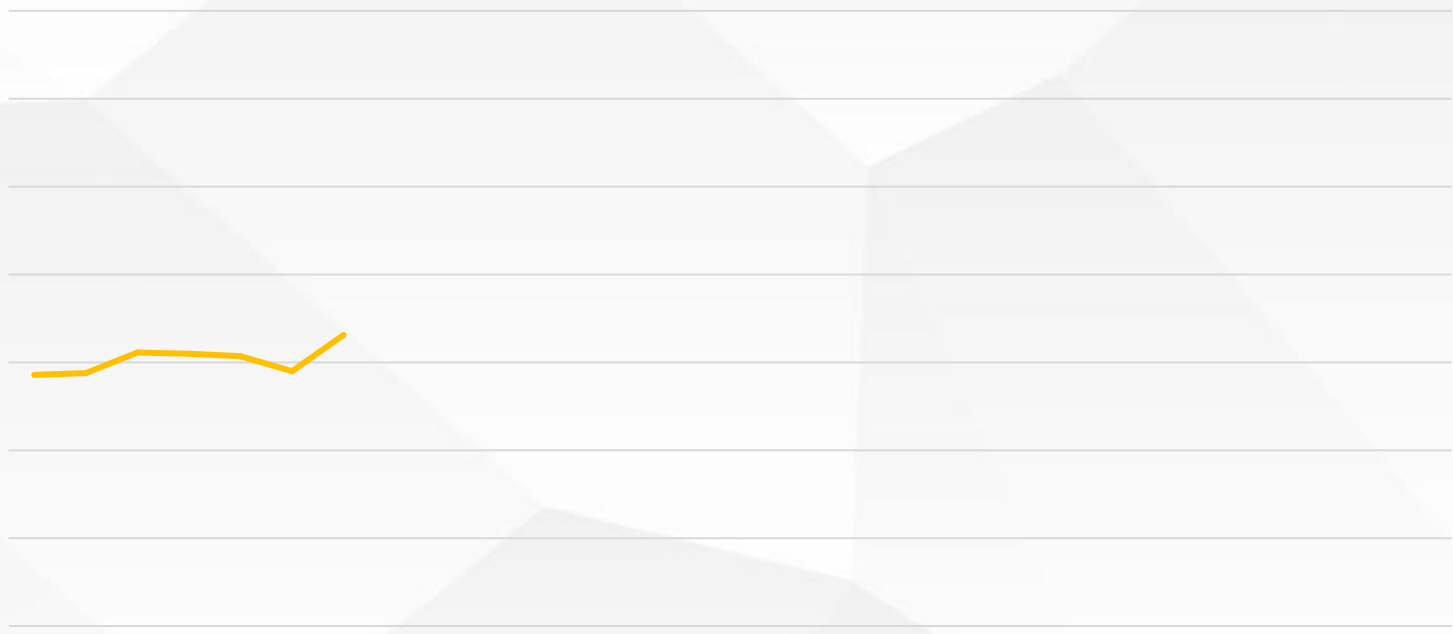


金信期货  
GOLDTRUST FUTURES





金信期货  
GOLDTRUST FUTURES





**金信期货**  
GOLDTRUST FUTURES







